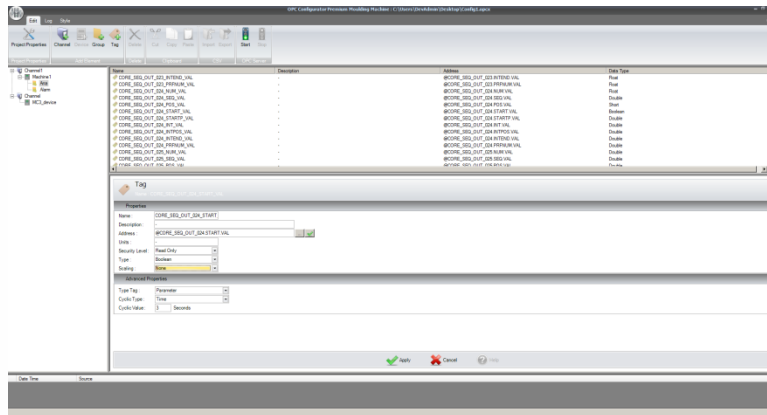


# OPC Servers™

Product Brief  
June 2016

## OPC SERVER MOULDING MACHINE



---

## **OPC SERVER PREMIUM MOULDING MACHINE Communication Platform**

ICONICS OPC Server Moulding Machine device driver provide data exchange between OPC Clients and compliant dedicate driver Injection Moulding Machines. The driver supports the TCP/IP and serial transport protocol. ICONICS OPC server Moulding Machine automatically optimizes your data acquisition based on client demand. Data integrity is ensured with our extensive error handling.

### **Drivers Features:**

#### ***Euromap63 Driver:***

- ✓ Presentation layer: Specific Device based on Request and Response Command Files
- ✓ Application layer:
  - Event Log File Format (EVENT)
    - Machine Alarms event
    - Current Machine Alarms
    - Overall Change Event
  - Machine Static Information (GETINFO)
  - Machine Parameters List (GETID)
  - Read Parameter Value (REPORT)
    - CYCLIC TIME or CYCLIC SHOT are supported
  - Set Parameter Value (SET)
  - Writing Parameter mode by Default/by Delay/by Trigger
- ✓ System Tags : 17 tags automatically created in a folder “system” for each machine
- ✓ Protocol
  - FTP Protocol

#### ***KraussMaffei MC3 Driver***

- ✓ Presentation layer: Specific Device based on serial protocol for KraussMaffei machines
- ✓ Commands :
  - A: Alarm-Request
  - I: Actual-value Reading
  - K: Read machine-identification
  - Y: Read setting value(s)
    - Y:pnn Read individual setting value
    - Y: Reading the new setting value
    - Y:A Read all setting values
    - Y:B Reading all setting-values (physical ones as well)
    - Overall Change Event
- ✓ System Tags : 8 tags automatically created in a folder “system” for each machine
- ✓ Protocol
  - RS232C Serial Protocol

## ***Euromap15 Driver:***

- ✓ Presentation layer: Specific driver based on international standard as IEEE-1118
- ✓ Application layer:
  - Value : Value of the defined realtime tag
  - Alarm : Value of the defined alarm tag
- ✓ System Tags : Until 9 tags automatically created in a folder "system" for each machine
- ✓ Protocol
  - DSP/2-DSP/3 Ethernet Protocol

## ***Protocol2 Driver :***

- ✓ Presentation layer: Specific serial driver for Ferromatik moulding machine
- ✓ Application layer:
  - Actual Value : Real value of the tag
  - Setting Value : the Set-Value tag
- ✓ System Tags : Until 2 tags automatically created in a folder "system" for each machine
- ✓ Protocol
  - RS232C Serial Protocol

## **OPC Server Premium – System Tags :**

System Tags are used to provide general error feedback to client applications, to allow operational control when a device is actively collecting data and to allow the standard parameters of a either a channel or device to be changed by an OPC client application when needed.

16 system tags are available in the "\_System" folder at the root of the OPC server:

- **\_Date:**
  - *Type: string*
  - *Description: Date of the local machine*
- **\_Date\_Day:**
  - *Type: unsigned long*
  - *Description: Day of the date (1-31)*
- **\_Date\_Month:**
  - *Type: unsigned long*
  - *Description: Month of the date (1-12)*
- **\_Date\_Year2:**
  - *Type: unsigned long*
  - *Description: 2 last digits of the year (00-99)*
- **\_Date\_Year4:**
  - *Type: unsigned long*
  - *Description: Year of the date (2014-2XXX)*
- **\_DateTime:**
  - *Type: datetime*
  - *Description: UTC Datetime*
- **\_DateTimeLocal:**
  - *Type: unsigned long*
  - *Description: Local machine datetime*
- **\_FullProjectName:**
  - *Type: string*
  - *Description: Configuration file path*
- **\_ProjectName:**
  - *Type: string*
  - *Description: Configuration file name*
- **\_Time:**
  - *Type: string*
  - *Description: local time*
- **\_Time\_Hour:**
  - *Type: unsigned long*
  - *Description: Hours of the local time (0-12)*
- **\_Time\_Hour24:**
  - *Type: unsigned long*
  - *Description: Hours of the local time (0-23)*
- **\_Time\_Minute:**
  - *Type: unsigned long*
  - *Description: Minutes of the local time (0-59)*
- **\_Time\_PM:**
  - *Type: bool*
  - *Description: indicates if PM hour.*
- **\_Time\_Second:**
  - *Type: unsigned long*
  - *Description: Seconds of the local time (0-59)*
- **\_TotalTagCount:**
  - *Type: unsigned long*
  - *Description: Number of tags published*

**Certified for:**

- ✓ KraussMaffei MC3/MC4,
- ✓ Engel,
- ✓ Ferromatik,

**Centralized Communications:**

- ✓ Single Server Platform for all Communications & all Devices,
- ✓ Ethernet & Serial protocol compliance,
- ✓ Consistent, User-Friendly Interface,
- ✓ Automatic Tag Generation,
- ✓ CSV Import/export,
- ✓ Write Optimization and Error Recovery,
- ✓ Advanced User Management,

**On-Demand Scalability:**

- ✓ Plug and Play Device Drivers and Communication Options,
- ✓ Parallel Configuration and Live Operation via Separate Configuration and Runtime,
- ✓ Multithread Channel Architecture,

**Industrial Strength:**

- ✓ OPC certified Compliance,

## System Requirements

OPC Server Premium Moulding Machine requires the following hardware and software components. System requirements may vary based on application size, system performance requirements, and loading factors.

### Minimum Hardware and Additional System Requirements:

Component	Requirement
CPU	Dual Core 64-bit processors (e.g. AMD Athlon 64 X2, Intel Xeon, or AMD Phenom)
Memory <sup>1</sup>	<i>Minimum:</i> 2 GB of RAM <i>Recommended:</i> 4 GB of RAM
Hard disk	At least 4 GB of free hard disk space is recommended
Drive	DVD Drive for installation
.NET Framework	Microsoft .NET Framework 3.0
Operating System	Any Windows 32 or 64-bit operating system, including:  Windows 8 x64 (Professional or Ultimate Edition) Windows 7 x64 (Professional or Ultimate Edition) Windows 7 x32 (Professional or Ultimate Edition) Windows Vista x64 SP2 (Business, Ultimate, or Enterprise Edition) Windows XP (Professional or Enterprise Edition) Windows Server 2012 x64 Windows Server 2008 R2 x64 Windows Server 2008 x64

**Note 1:** It is recommended that the system page file size be a minimum of four (4) times the size of installed (physical) RAM.



Founded in 1986, ICONICS is an independent software developer of award-winning, real-time visualization, data historians, automation intelligence and suite of analytics software solutions. ICONICS products are installed in 70% of the Fortune 500 companies around the world, helping customers be more profitable, agile, efficient and sustainable.

ICONICS is a long time Microsoft Gold Certified Partner and Winner of the very prestigious Microsoft Partner of the Year Award, providing advanced software for many end users and technology suppliers. ICONICS has over 250,000 applications installed in multiple industries worldwide.

ICONICS cultivates an international culture of innovation, creativity and excellence in product design, development, technical support, sales and service. World headquarters are located in Foxborough, Massachusetts, USA.

#### World Headquarters

100 Foxborough Blvd.  
Foxborough, MA, USA, 02035  
Tel: 508 543 8600  
Email: [us@iconics.com](mailto:us@iconics.com)  
Web: [www.iconics.com](http://www.iconics.com)

#### Czech Republic

Tel: 420 377 183 420  
Email: [czech@iconics.com](mailto:czech@iconics.com)

#### Italy

Tel: 39 010 46 0626  
Email: [italy@iconics.com](mailto:italy@iconics.com)

#### Germany

Tel: 49 2241 16 508 0  
Email: [germany@iconics.com](mailto:germany@iconics.com)

#### Netherlands

Tel: 31 252 228 588  
Email: [holland@iconics.com](mailto:holland@iconics.com)

#### France

Tel: 33 4 50 19 11 80  
Email: [france@iconics.com](mailto:france@iconics.com)

#### UK

Tel: 44 1384 246 700  
Email: [uk@iconics.com](mailto:uk@iconics.com)

#### Australia

Tel: 61 2 9727 3411  
Email: [australia@iconics.com](mailto:australia@iconics.com)

#### China

Tel: 86 10 8494 2570  
Email: [china@iconics.com](mailto:china@iconics.com)

#### India

Tel: 0091 22 67291029  
Email: [india@iconics.com](mailto:india@iconics.com)



2012 PARTNER OF THE YEAR  
Sustainability  
Winner



**Further information:**

[www.iconics.com](http://www.iconics.com)